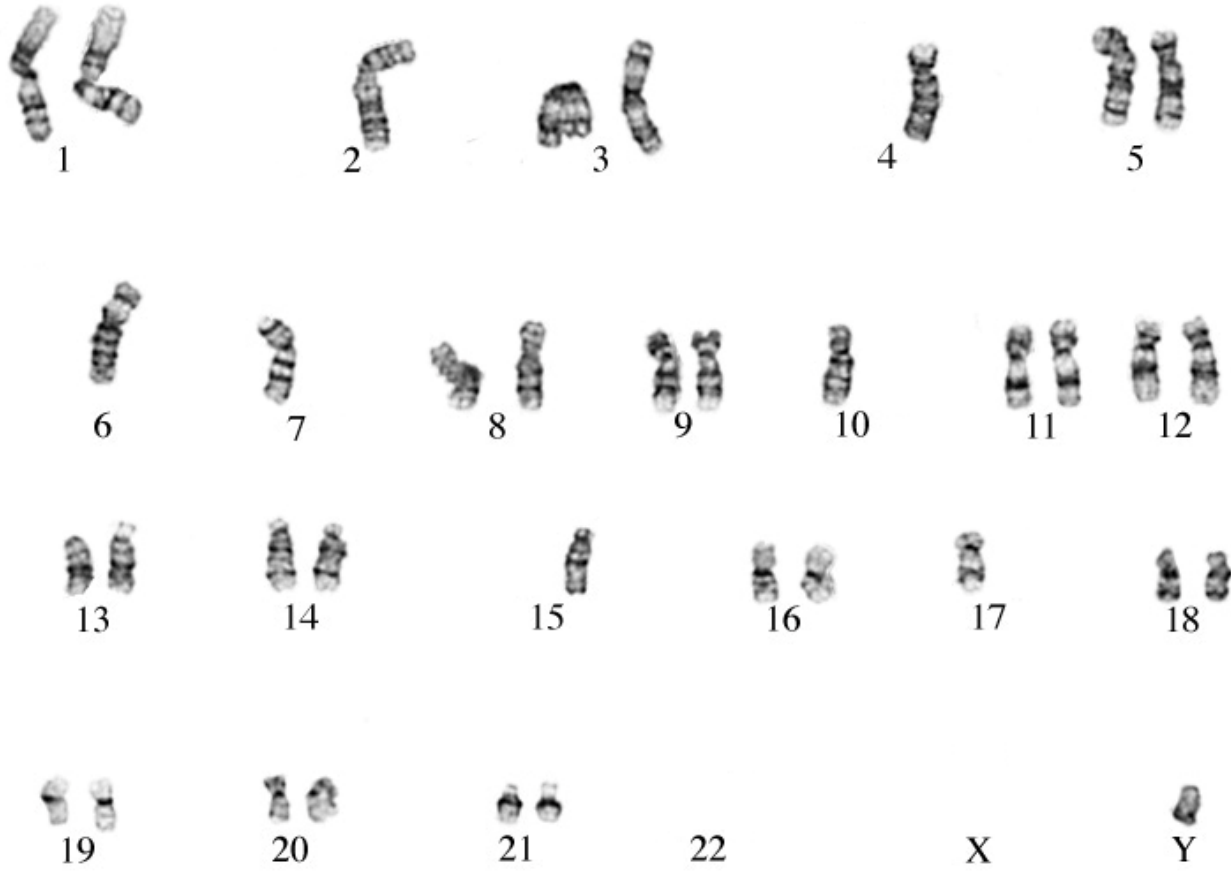


caryotype 1:



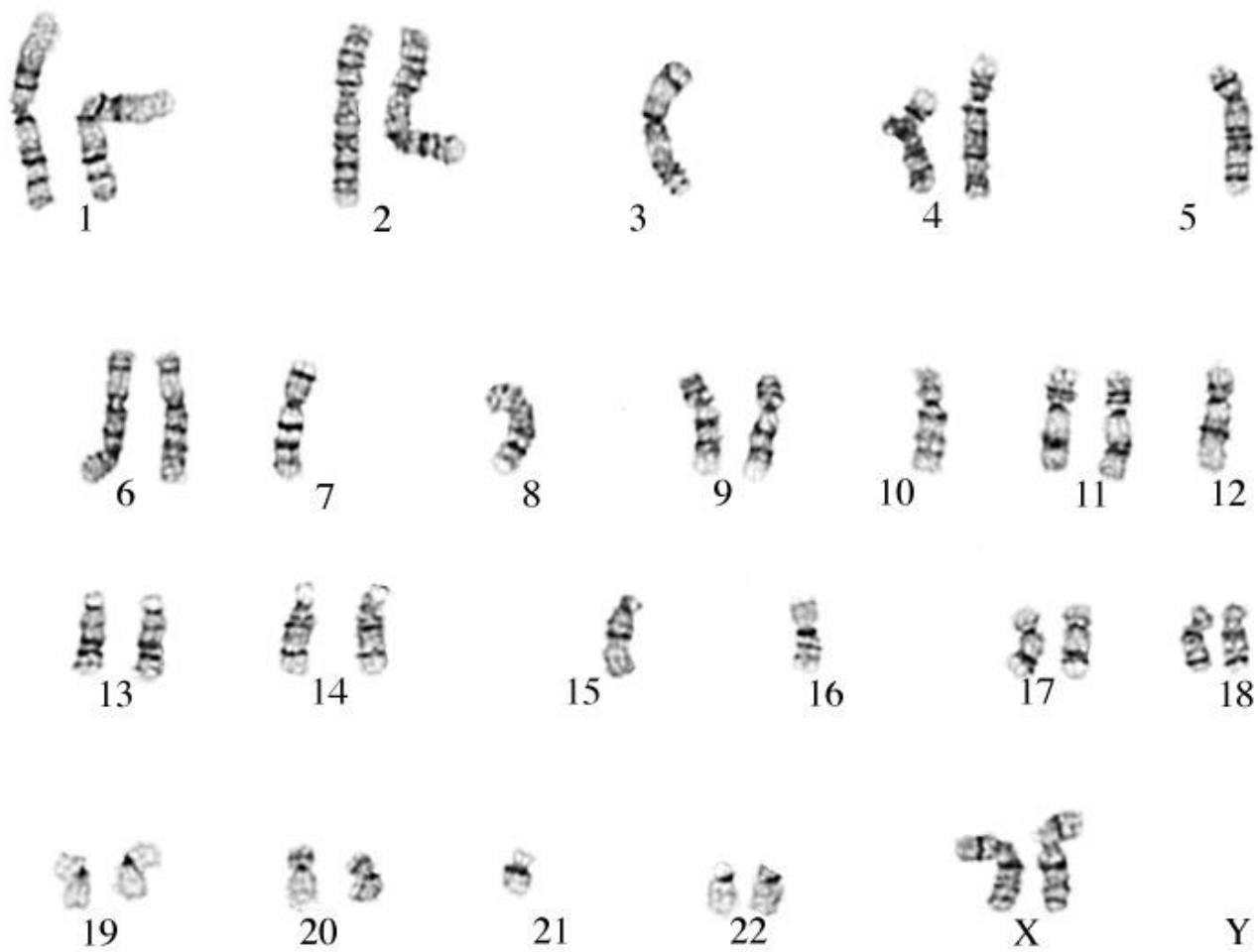
chromosomes à classer



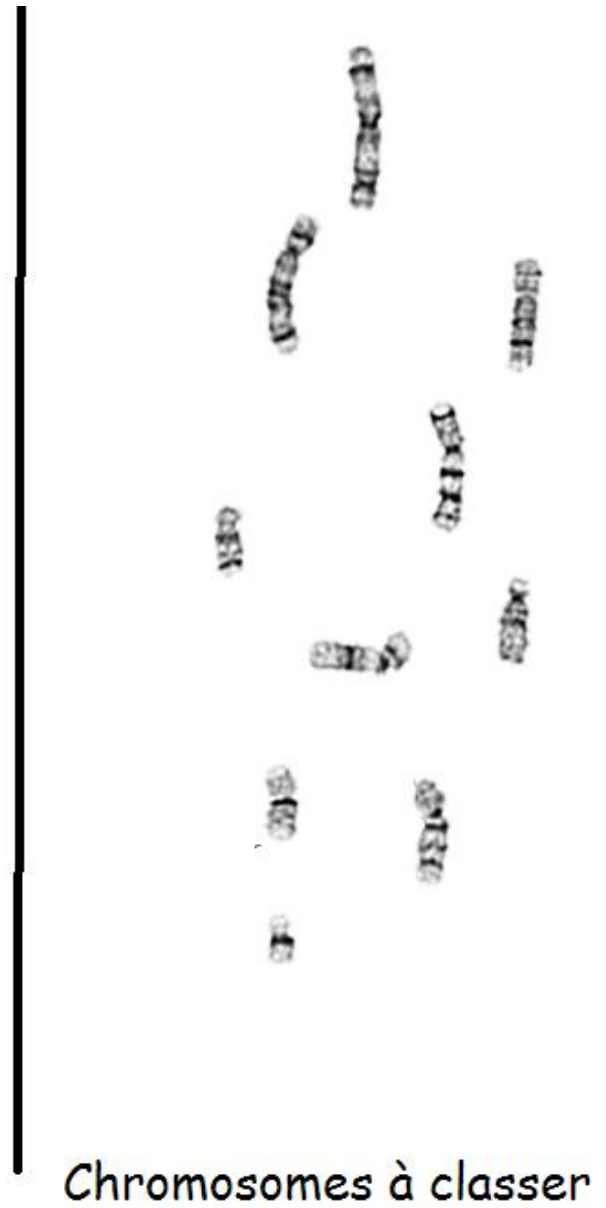
caryotype 2:

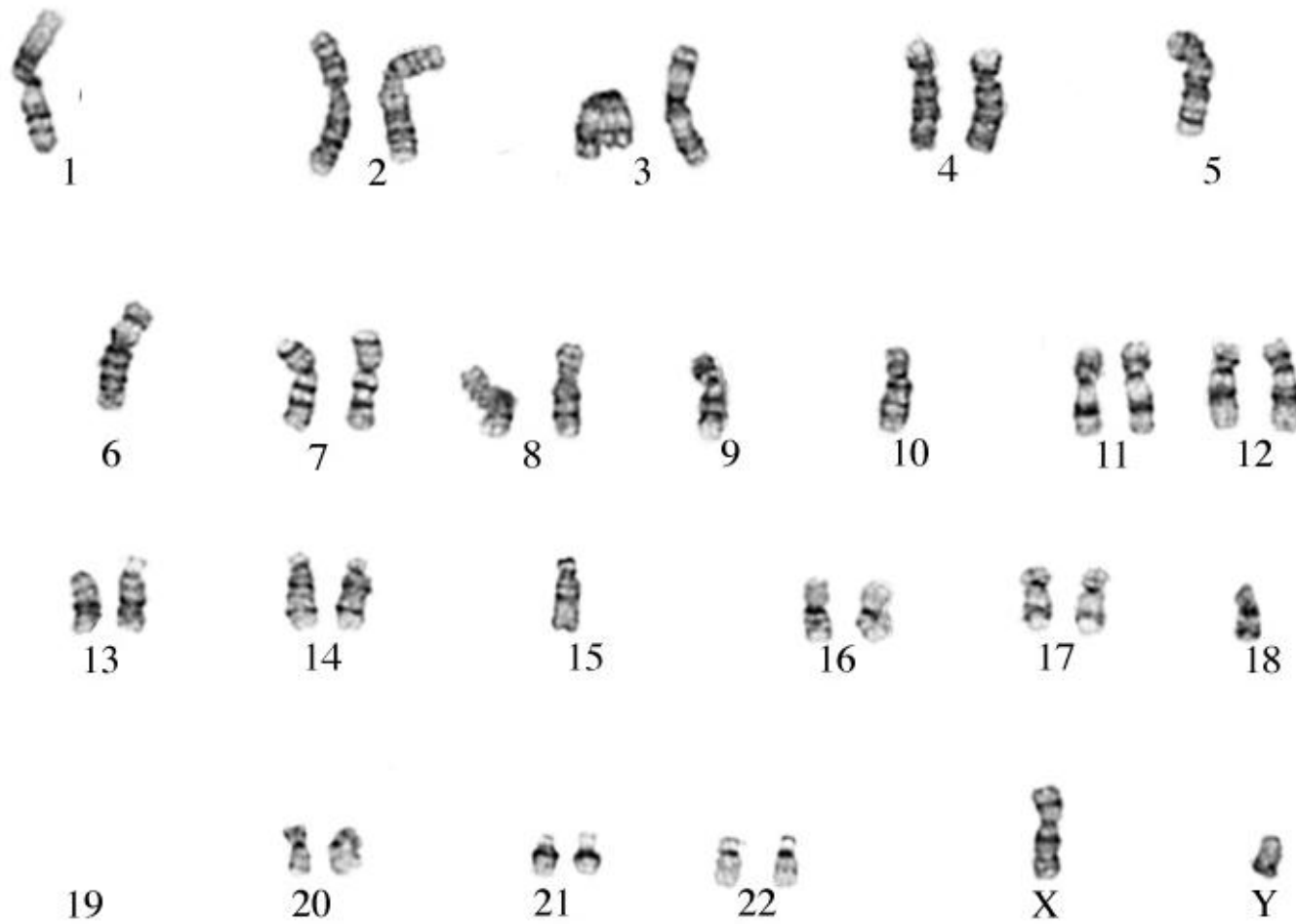


chromosomes à classer

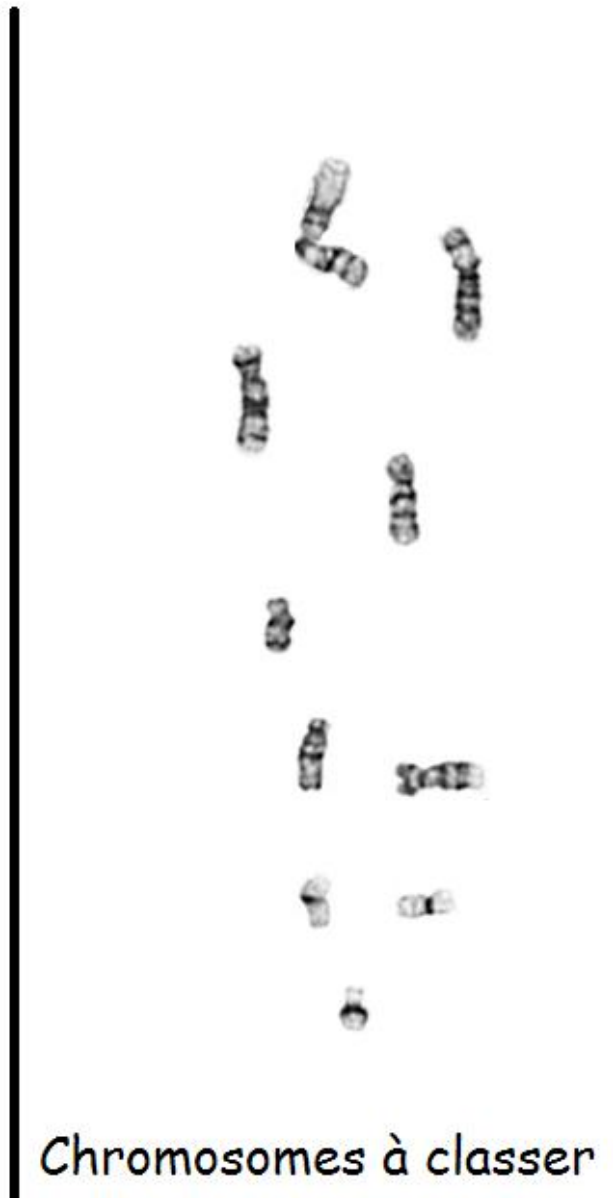


caryotype 3:.....



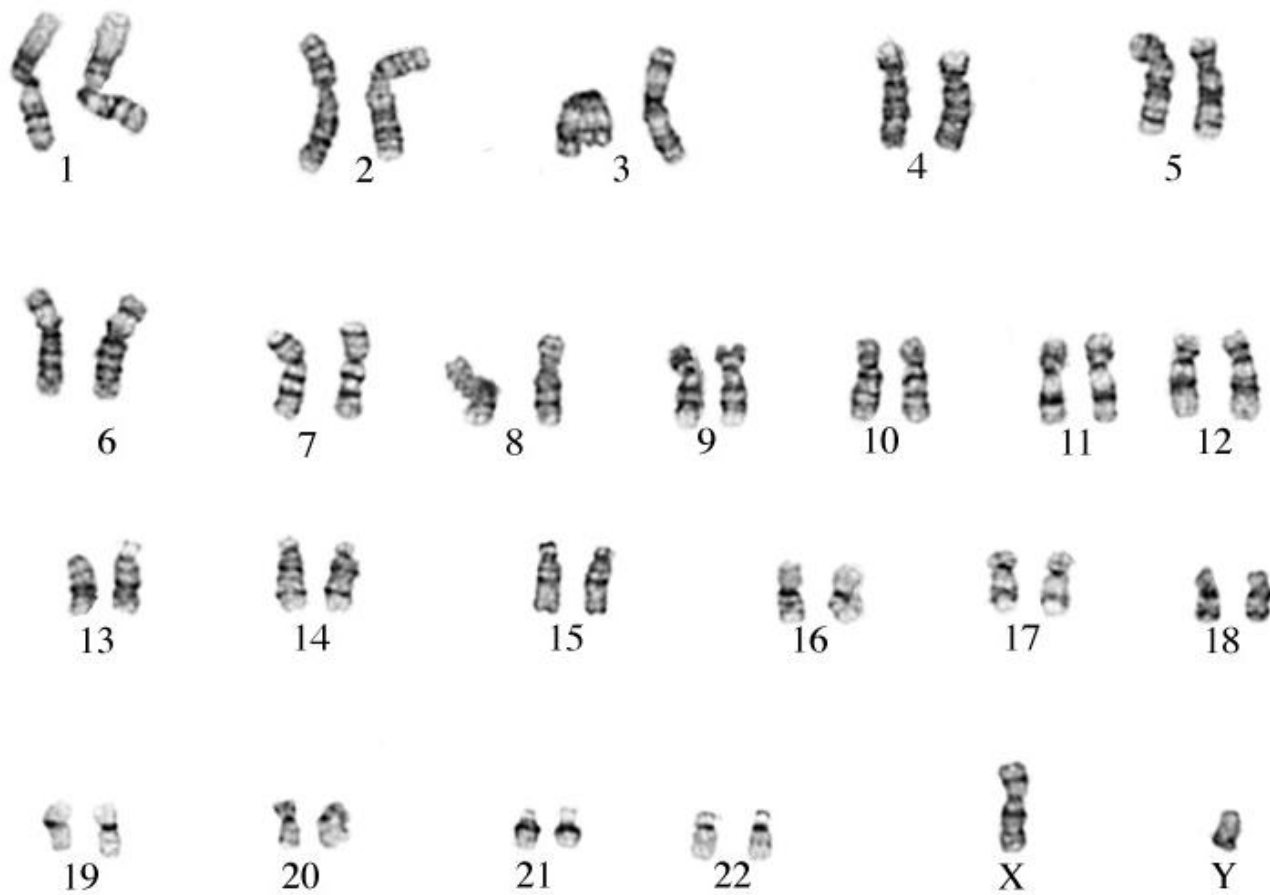


caryotype 4:.....

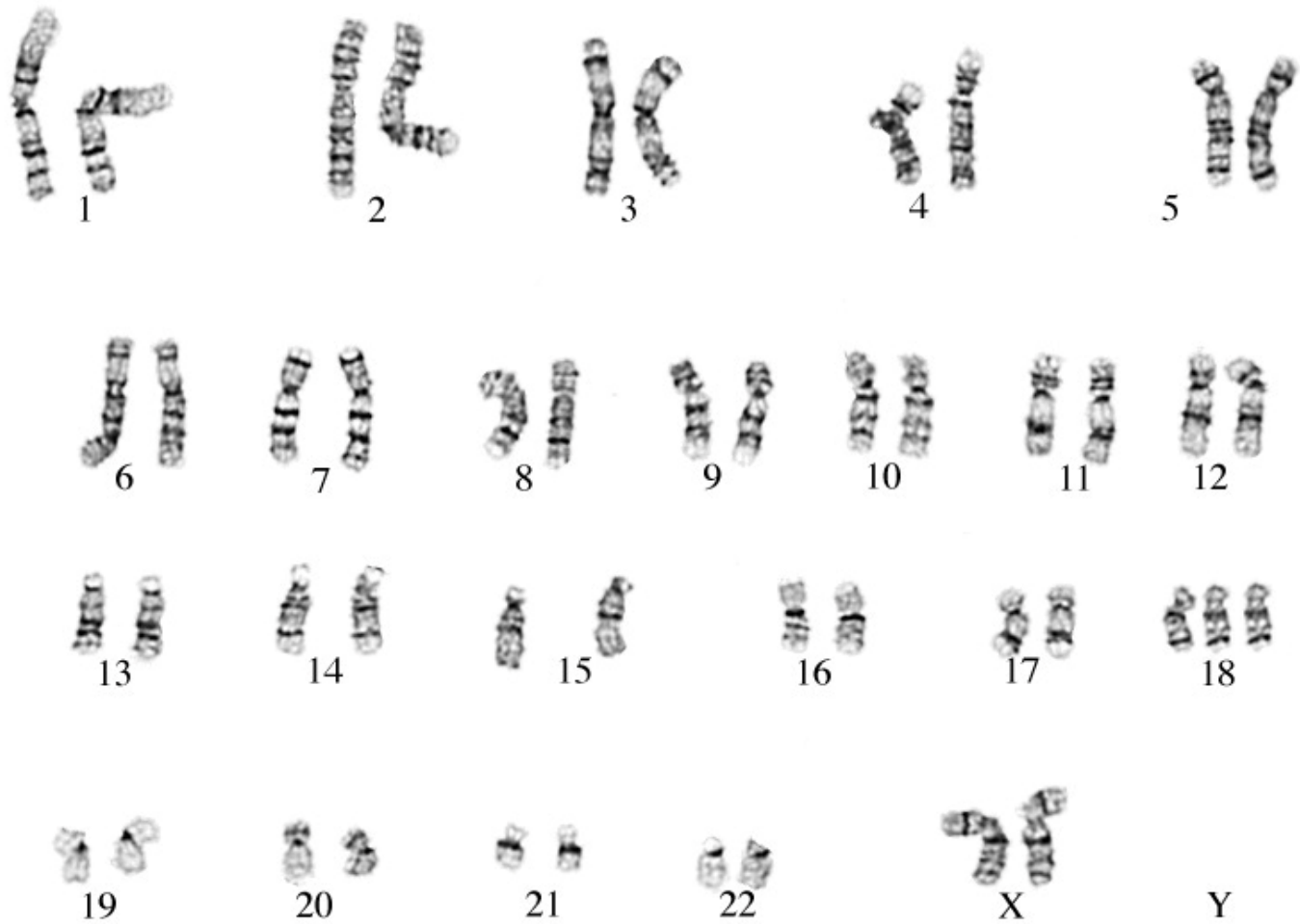




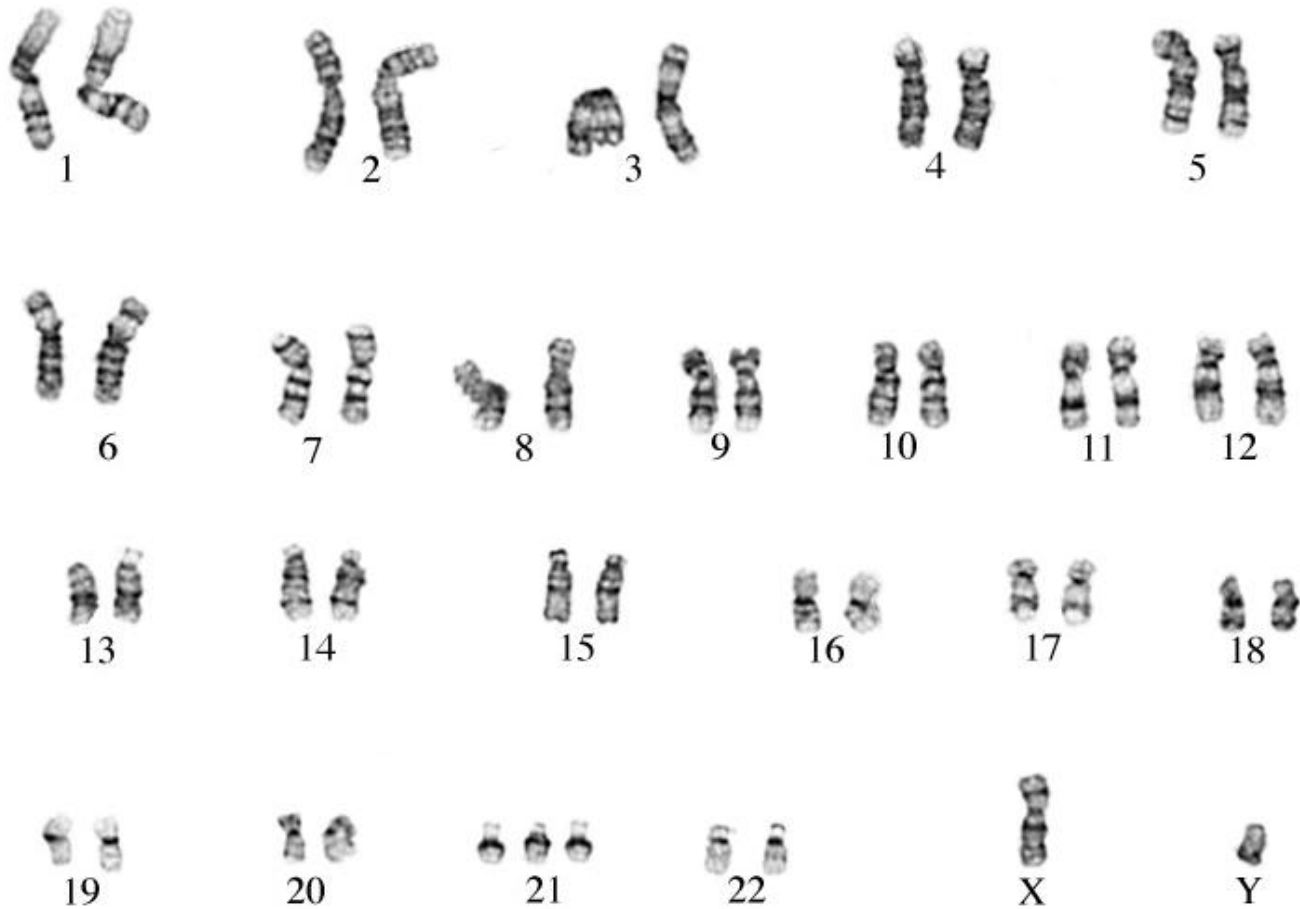
caryotype d'une femme



caryotype d'un homme



caryotype d'une femme
 trisomie 18 (syndrome d'edwards)



caryotype d'un homme
trisomie 21 (syndrome de down)